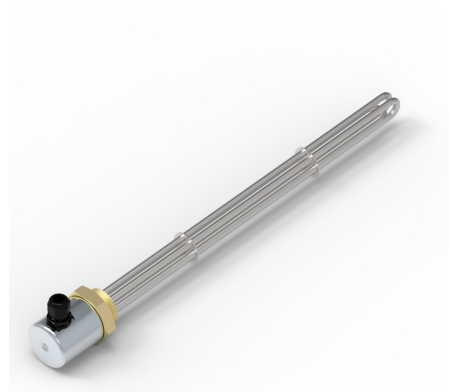


# CSN<sup>®</sup> screw-in heater type ERC/ERCH

## DESCRIPTION

Screw-in heaters are ideal for the direct heating of various media. They are manufactured as fully ready-to-use components, but without integrated temperature monitoring. They are easy to install by screwing them into the corresponding threaded openings of containers or pipes, which enables uncomplicated integration into existing systems. Despite their reduced structure, our screw-in heaters offer advanced features to optimise energy efficiency, safety and ease of maintenance.



## PRODUCT ADVANTAGES

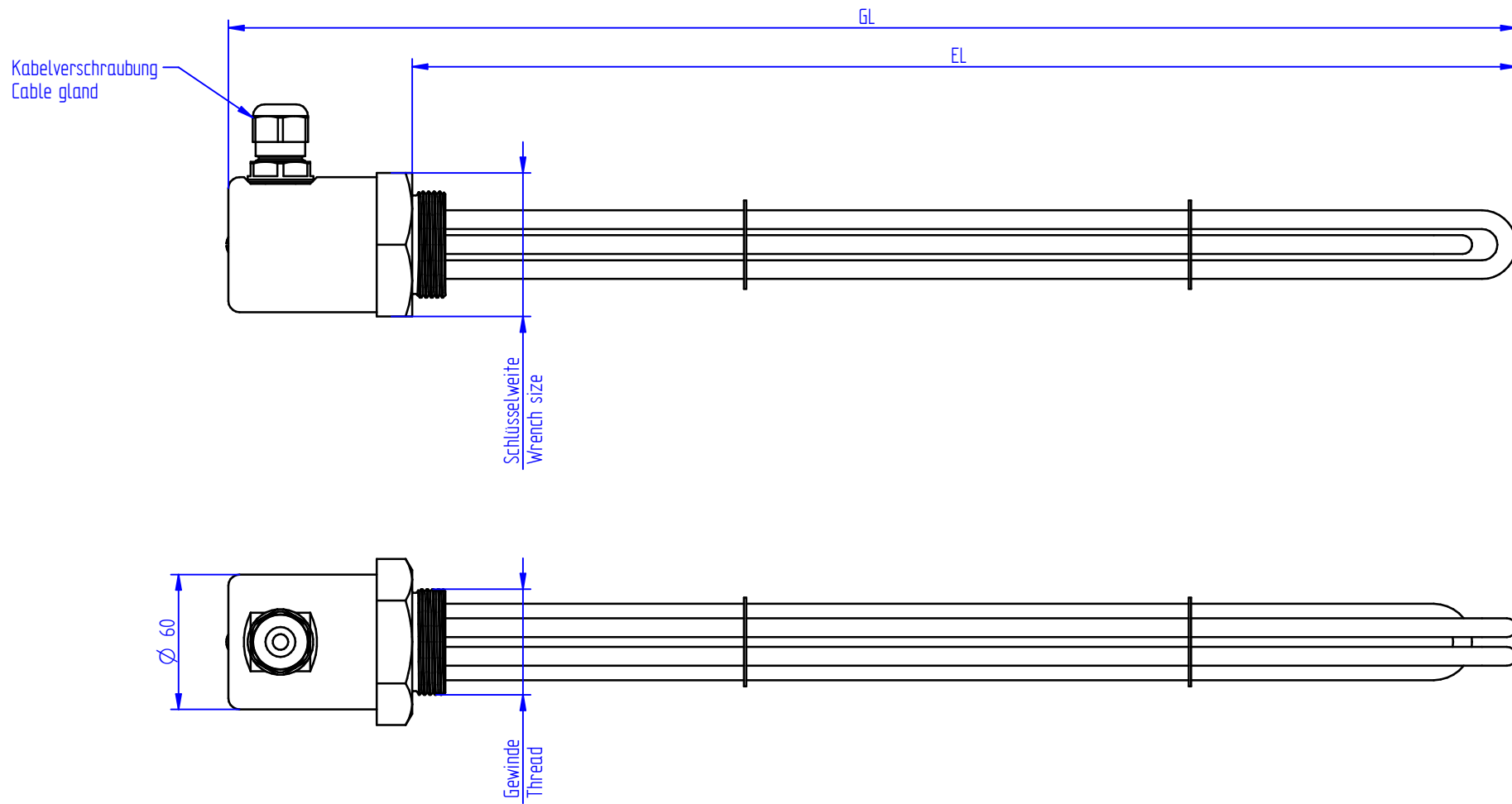
- Robust, industrial design
- CSA, UL and EAC compliant versions available on request
- Design with optimised surface load guarantees a long service life
- Customisable design possible - power / voltage / materials
- Low maintenance requirements
- Efficient conversion of electricity into thermal energy

## TECHNISCHE DATEN

Medium	Liquid; Gaseous; Solids
Performance	50 to 30,000 watts
Tension	12 to 900 V
Connection thread	3/4" to 2 1/2"
Materials Connection thread	Brass; 1.4305 (AISI 303); 1.4571 (AISI 316 Ti)
Tubular heating element diameter	8.5; 11.5; 16mm
Materials Tubular heating elements	1.4301 (AISI 304); 1.4404 (AISI 316L); 1.4541 (AISI 321); 1.4571 (AISI 316 Ti); 1.4828 (AISI 309); 1.4876 (Incoloy 800) and 2.4858 (Incoloy 825)
Installation length	140 to 3500 mm
Execution	ERC = without connection cover ERCH = with connection bonnet



# Einschraubheizkörper Typ ERCH



# Einschraubheizkörper Typ ERC

