

CSN[®] high-performance cartridge heaters

DESCRIPTION

A high-performance electric cartridge heater is capable of generating large amounts of energy in the form of heat. This type of cartridge heater is often made of a heat-resistant material that ensures efficient heat transfer. High-performance cartridge heaters are used in various industrial applications, including mechanical engineering, plastics processing, food production and other areas where precise and powerful heating is required. They are designed to reach high temperatures and ensure rapid heat transfer to make processes more efficient.



PRODUCT ADVANTAGES

- Customised design possible according to customer requirements
- Uncomplicated assembly
- Certifications for the American market such as UL/CSA are available
- Express production available within 24-48 hours

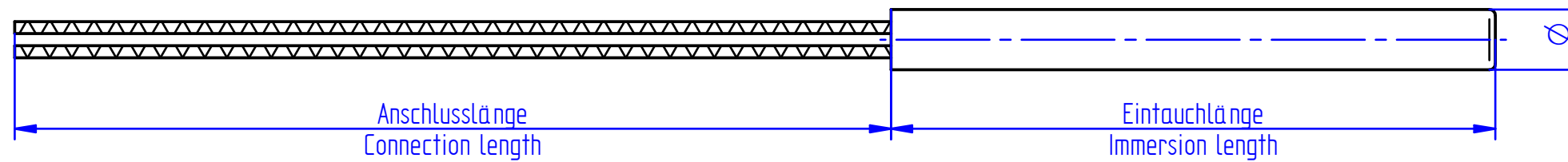
- Suitable for working temperatures of up to 750°C

TECHNISCHE DATEN

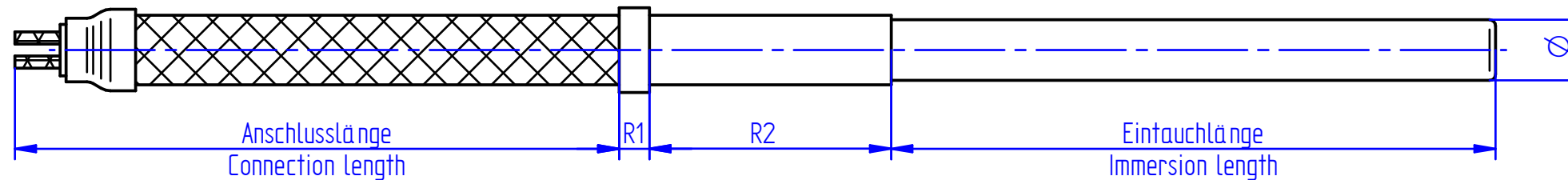
Diameter	6 to 20 mm
Installation length	25 to 3000 mm
Performance	20 to 5000 W
Power distribution	Customised power distribution possible on the cartridge head and/or cartridge base
Tension	6 to 480 V
Sheath material	Steel (1.4571); stainless steel (1.4541)
Working temperature	0 to 750 °C

Screw-in nipple	without; M10x1; M12x1, ¼"; M14x1.5; M16x1.5, 3/8"; ½"; M20x1.5; M26x1.5
Material Connection thread	Stainless steel 1.4541
Thermocouple	Type K (potential-free); Type K (potential-containing); Type J (potential-free); Type J (potential-containing)
Thermocouple measuring point	Floor; Centre
Closure	Silicone; ceramic casting compound; acid iron cement; GISO-G
Stranded wire	Silicone stranded wire (max. 180°C) Silicone-insulated Ni wire (max. 180 °C) GLS stranded wire (max. 320°C) GLS stranded wire reinforced version (max. 450°C), high-temperature stranded wire (max. 600 °C),
Further connection options	Silicone cable (max. 180°C) Metal braided hose with connecting tube (max. 250°C) Metal braided hose (max. 250°C) Corrugated metal hose (max. 220°C) Angle block & pipe section Pipe section Stainless steel corrugated hose (max. 450°C)

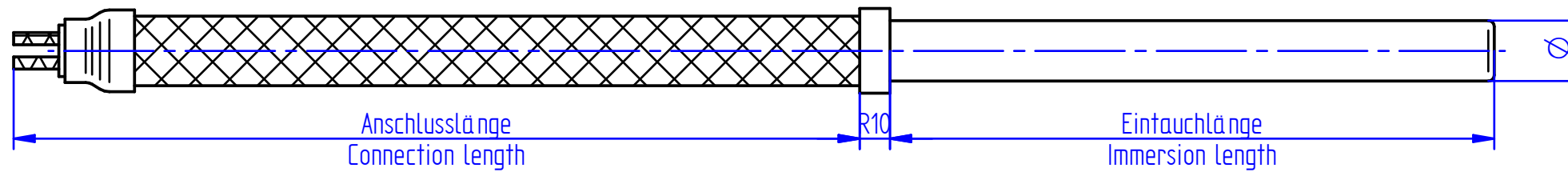
Anschluss mit Glasseidenlitzen



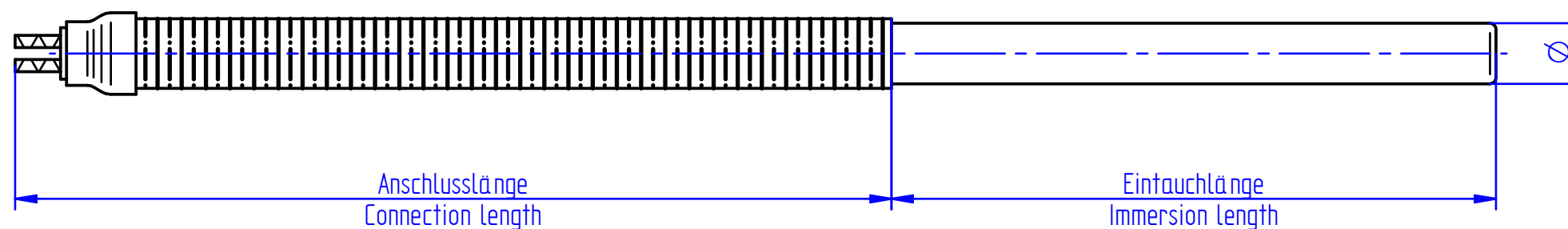
Anschluss mit Metallgeflechtschlauch und Rohrstück



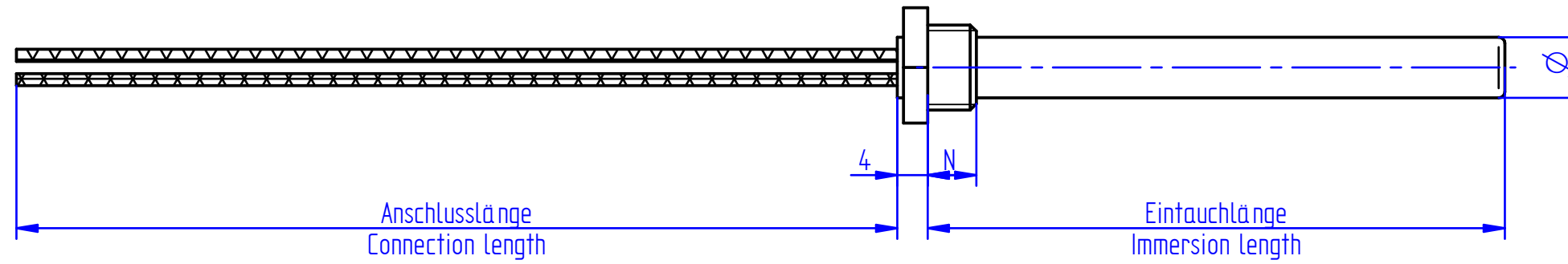
Anschluss mit Metallgeflechtschlauch



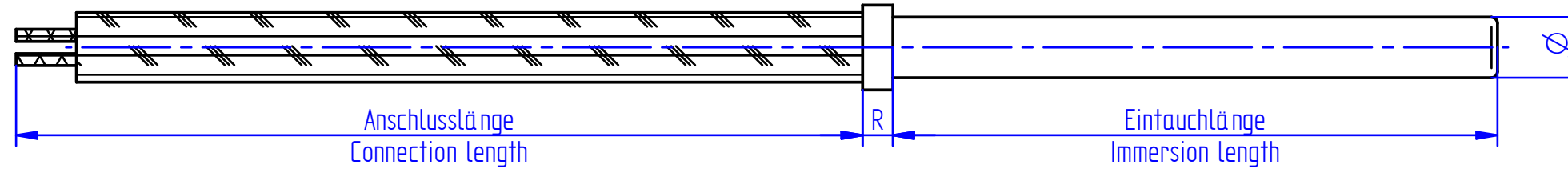
Anschluss mit Metallwellschlauch



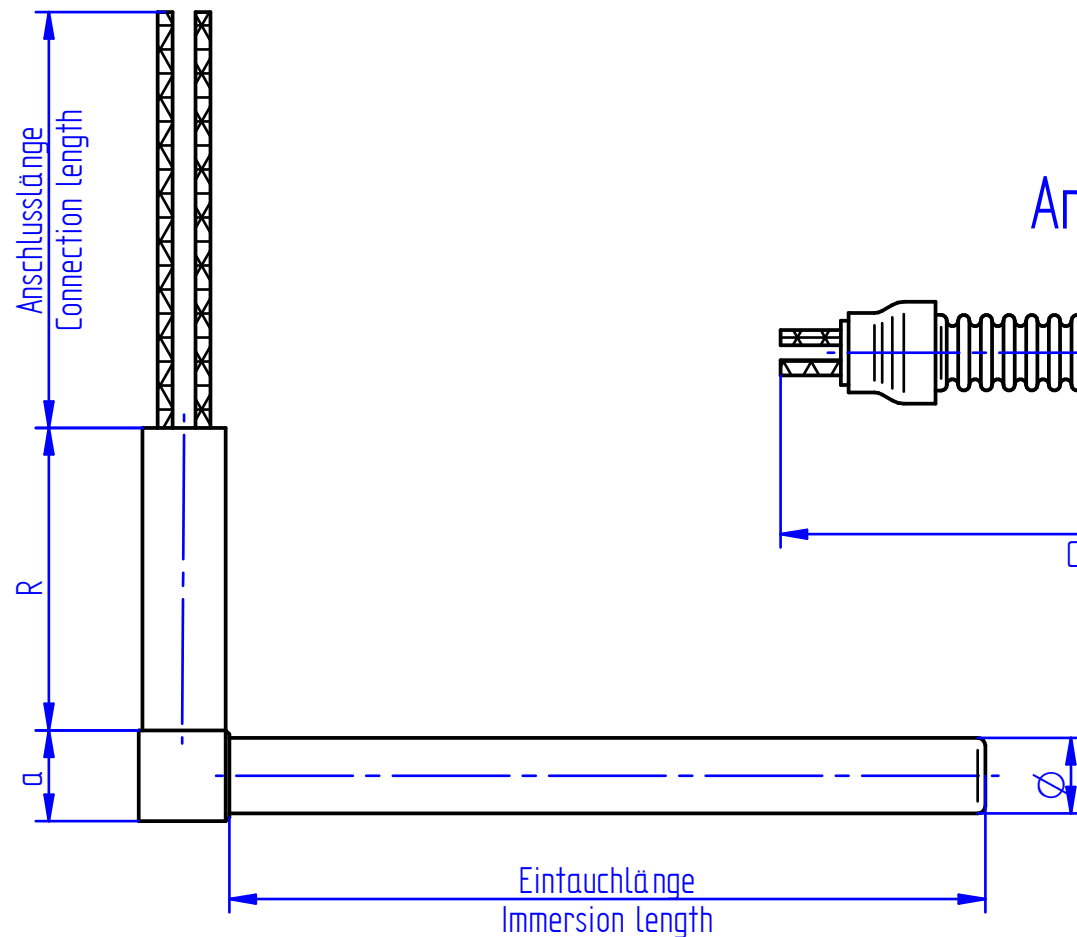
Anschluss mit Einschraubnippel



Anschluss mit Silikonkabel



Anschluss mit Winkelklotz und Rohrstück



Anschluss mit Edelstahlwellenschlauch und Rohrstück

